



Wythburn Street, Salford

£1,100 PCM

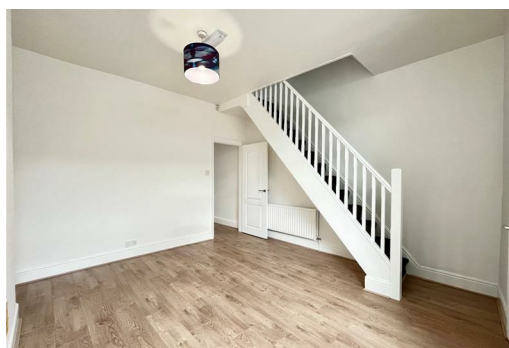
Step inside this recently refurbished TWO bedroom terraced house on Wythburn Street, Salford. The property has been updated throughout, with a clean and modern finish. It offers a practical layout and is ready to move into.

Upon entry, you're greeted with a light, bright entrance hallway that immediately feels welcoming and spacious. There's a cozy front reception room making great space for a lounge or dining room! Beyond this is a versatile reception room that could serve as a dining area, home office, or extra sitting room – basically whatever your heart desires. The modern fitted kitchen sits to the rear, ready for you to whip up anything from a quick breakfast to a Michelin worthy feast!

Upstairs, you'll find a stylish modern bathroom with a three-piece suite, offering a bit of luxury every morning, think spa vibes but without the robe and cucumber slices!
There's a large double master bedroom, and a single second bedroom, each with plenty of space!

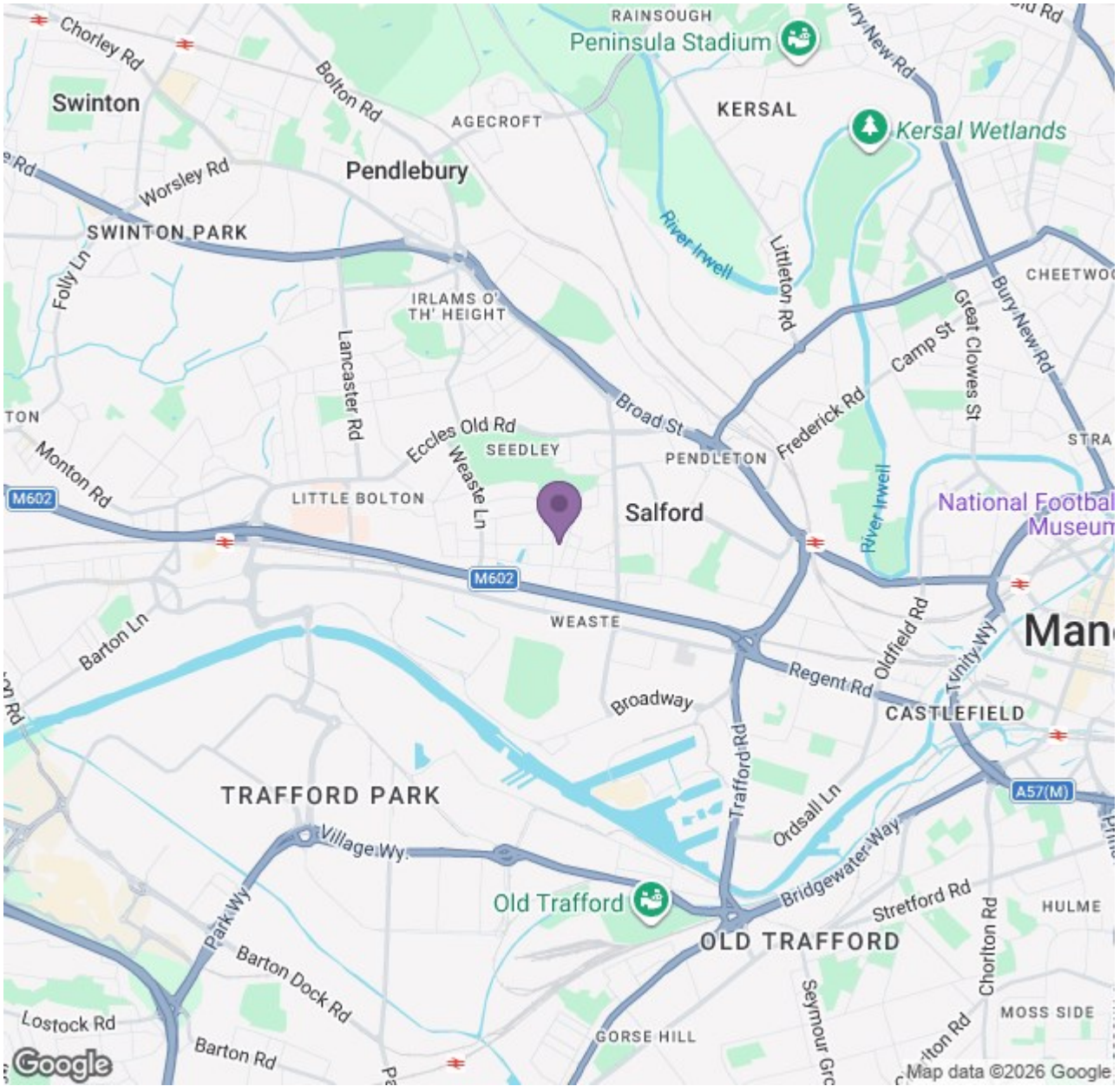
Externally, there's a rear yard, perfect for a barbecue, a few potted plants, or a quiet spot to enjoy a cup of coffee without your neighbours judging your garden gnome collection.

Location-wise, it's hard to beat. Literally on the M602, with direct access to the M62, it's a commuter's dream. Manchester city centre and Salford are just minutes away, so whether you're a young family looking for convenience or a professional couple wanting easy links to work and play, this property ticks all the boxes.



Ascend

Built on higher standards



Energy Efficiency Rating		Environmental Impact (CO ₂) Rating	
Current	Target	Current	Target
83	83	83	83
84	84	84	84
85	85	85	85
86	86	86	86
87	87	87	87
88	88	88	88
89	89	89	89
90	90	90	90
91	91	91	91
92	92	92	92
93	93	93	93
94	94	94	94
95	95	95	95
96	96	96	96
97	97	97	97
98	98	98	98
99	99	99	99
100	100	100	100

Ascend

Built on higher standards